

**\*\*\* Please attempt to identify your incoming water supply line.\*\*\***

The Federal EPA has issued an Update to the Lead and Copper Rule with compliance required by all public water utilities.

Your service line is the pipe that delivers drinking water to your home. **If your home was constructed before 1990, it may contain lead.** You can conduct a simple visual check where the water line enters your home, usually in the basement where your shut-off valve is. The City requires this information to comply with the Lead and Copper Rule.

Please complete this form and return it in the enclosed envelope OR submit online using the QR code/link below or by visiting [www.crownpoint.in.gov](http://www.crownpoint.in.gov). Photos may also be submitted via the form link below.



<https://form.jotform.com/230325341765048>

If you need assistance completing this survey or have questions, please contact the **City of Crown Point Public Works Department** at 219-662-3252, x4. You may also contact Commonwealth Engineers at 317-888-1177.

**THANK YOU IN ADVANCE FOR YOUR COOPERATION!**

# !!!IMPORTANT!!!

**PLEASE COMPLETE THIS SURVEY REGARDING THE MATERIAL OF YOUR WATER SERVICE LINE**

Date: \_\_ / \_\_ / \_\_\_\_

Property Address: \_\_\_\_\_

Approximate Date of Building Construction: \_\_\_\_\_

The water service line entering my home is:

- Lead
- Copper
- Galvanized
- Plastic
- Other: \_\_\_\_\_

The plumbing inside my home is:

- Lead
- Copper
- Galvanized
- Plastic
- Other: \_\_\_\_\_

Exhibit 5-1: Examples of Commonly Found Pipe Materials



Plastic

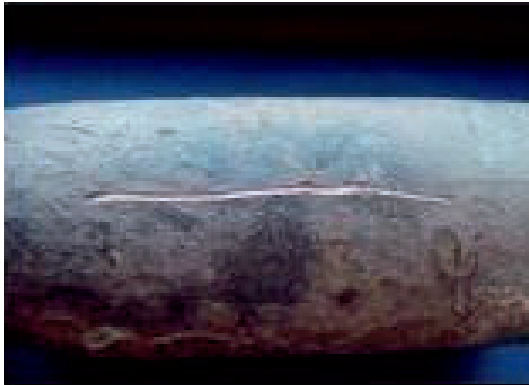
Scratched Lead

Copper

Galvanized Steel & valve

Source: <https://www.epa.gov/ground-water-and-drinking-water/protect-your-tap-quick-check-lead-0>.

# WHAT DO LEAD SERVICE LINES LOOK LIKE?



Lead service lines are generally a dull gray color and are very soft. You can identify them easily by carefully scratching them with a key. If the pipe is made of lead, the area you've scratched will turn a bright silver color.

**DO NOT use a knife or other sharp instrument and take care not to puncture a hole in the pipe!**

**Note:** Galvanized piping can also be a dull gray color. A strong magnet will typically cling to galvanized pipes but will not cling to lead pipes.



Lead service lines can be connected to the residential plumbing using solder and have a characteristic solder "bulb" at the end, a compression fitting, or another connector made of galvanized iron or brass/bronze.

*source: <https://www.awwa.org/Portals/0/AWWA/Communications/FINALLeadServiceLineCommGuide.pdf>*

---

Questions regarding this survey may be directed to the City of Crown Point Public Works Department at 219-662-3252, x 4 or Commonwealth Engineers, Inc. at 317-888-1177.

City of Crown Point Public Works  
705 Industrial Blvd.  
Crown Point, IN 46307  
[crownpoint.in.gov](http://crownpoint.in.gov)